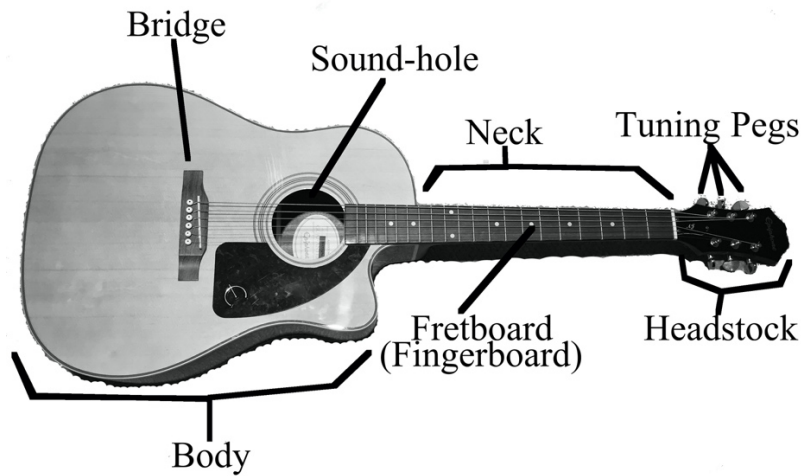


## Lesson Plan 07/15/2020

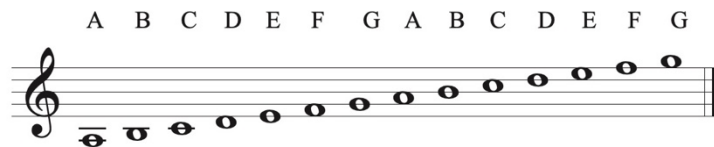
- **Parts of the guitar:**



- **Holding the guitar:**

1. On right leg
2. Classical position – On left leg
3. Using a strap

- **Musical alphabet:**



- **Open String notes:**

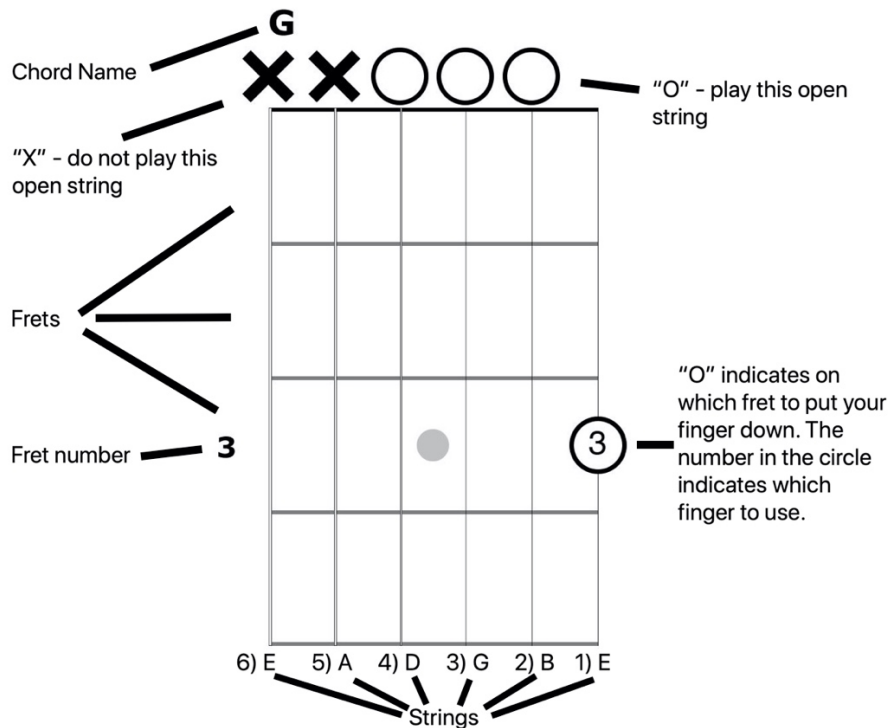
1. E
2. B
3. G
4. D
5. A
6. E

Remember that on the guitar the string numbering starts from the string highest in pitch (Thinnest string, the one closest to the floor).

- **Tuning with a tuner and by ear.**

Remember that if the note has a # (Sharp sign) next to, that means it is one step higher than. For example, D# is one step higher than D.

- **Reading a chord diagram:**



- **Left hand Finger numbers:**



• Chord Diagrams:

